

SAFETY in a **Flash!**



**LEARN WAYS
YOU CAN STAY
SAFE AROUND
ELECTRICITY!**

**FROM YOUR
FRIENDS AT**



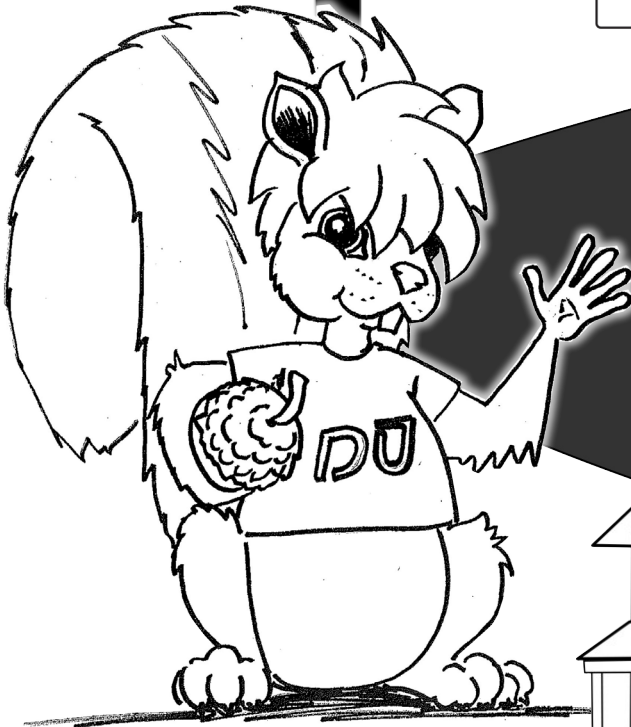
Hidy there neighbor!

My name is Flash the Squirrel and I'm here today to teach you how to stay safe around electricity - inside and outside.

So buckle up...and let's go!



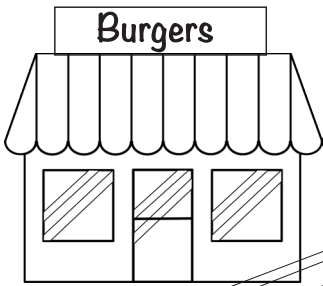
S _ _ _ O _ _ _



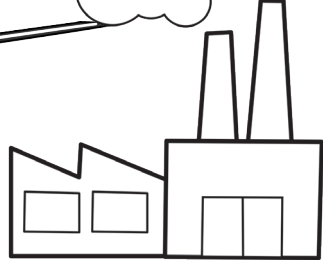
Alright, for starters, fill in the blanks to learn about the different places we use electricity.



_ _ _ M _ _ _

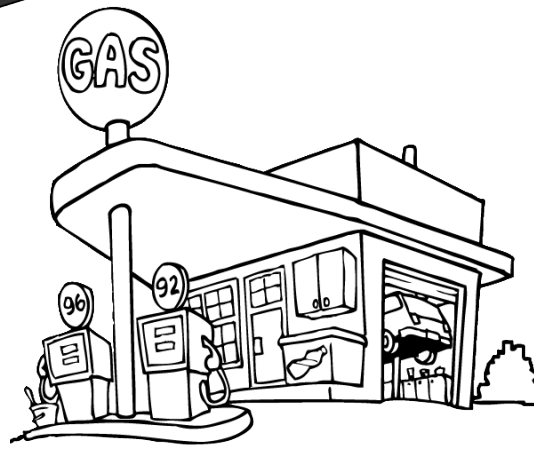


T _ _ R

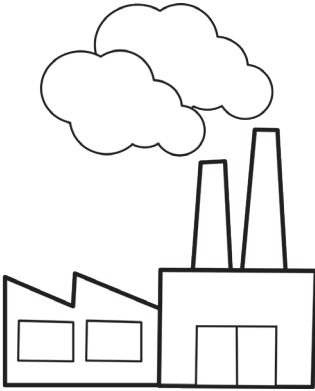


F _ C _ _ R _

_ T _ R _

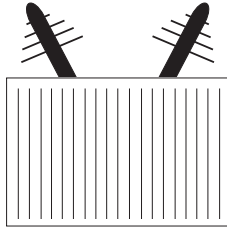


How does electricity get to us?



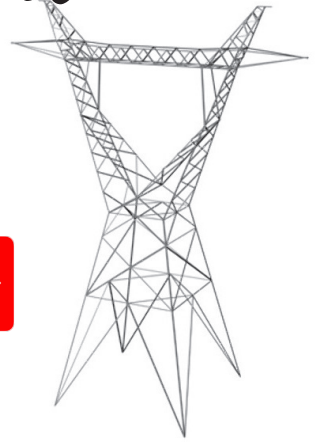
Power Plant

For starters, the electricity we use is generated at a power plant using huge "spinning blades" called turbines.



Step-up Transformer

The "step up" transformer increases the voltage so electricity can be transported over transmission lines.



Transmission System

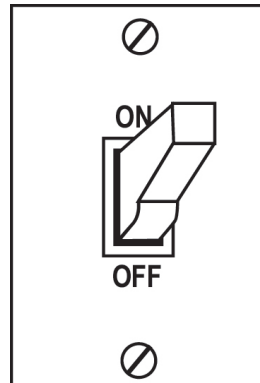
Electricity "travels" over transmission lines and towers like this one at high voltage - 161,000 volts (161 kV).



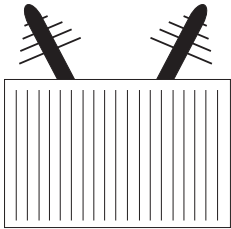
Why is energy efficiency important?

It costs millions of dollars for TVA (and other power generation companies) to build new power plants.

By being smart about how we use electricity, we can make sure we have plenty of power to do the things we want - while not being wasteful!

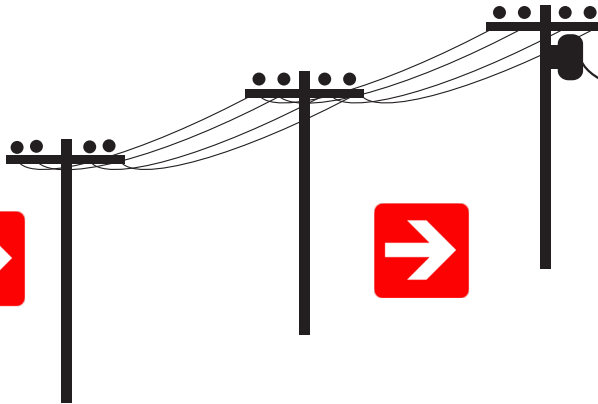


Turn off lights and other electrical equipment when they are not in use.



Step-down Transformer

Once it gets to our community, the electricity's voltage is reduced using a "step-down" transformer located in a substation.



Distribution System

Power is delivered to our homes and businesses using a complex distribution network of poles, wires and transformers.



Homes and Businesses

For most houses and businesses, the electricity goes through another transformer to reduce the voltage to 120V for safe usage.



Follow the 78/68 rule! Set the thermostat at 78 in the summer and 68 in the winter for peak efficiency.



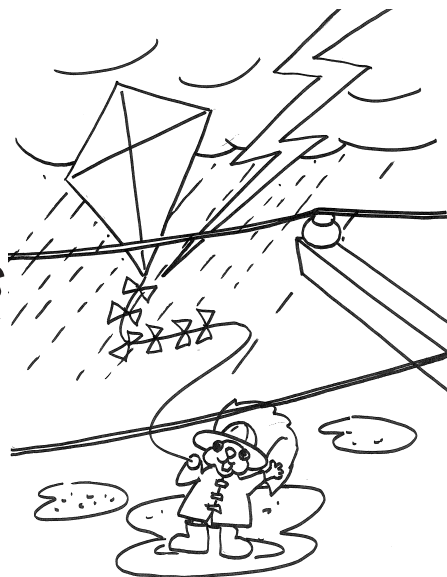
Make sure you have at least 12" of insulation in the attic and look for cracks around doors and windows.

Being energy wise can save you \$\$\$!

All us squirrels know that electricity makes our lives easier. But it can also be dangerous!



Don't fly kites around power lines or during a storm!



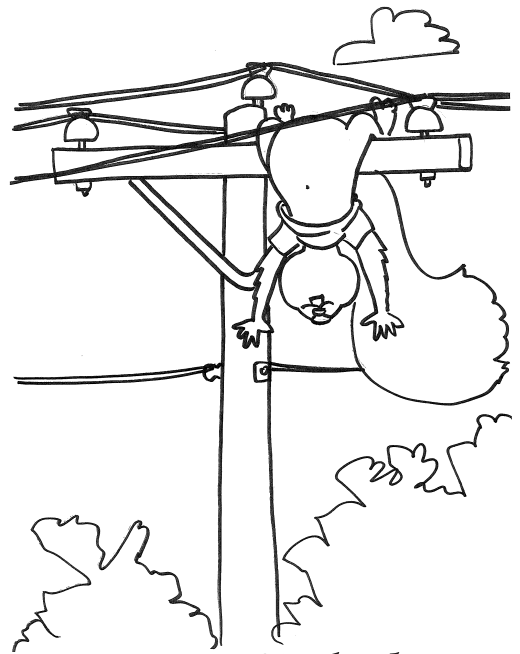
Never use an electrical appliance around water!



Don't climb trees that are near power lines!



If you see a power line on the ground, don't touch it!



Don't climb on substation fences or power poles!

Be careful with long poles, ladders, and other metal objects!

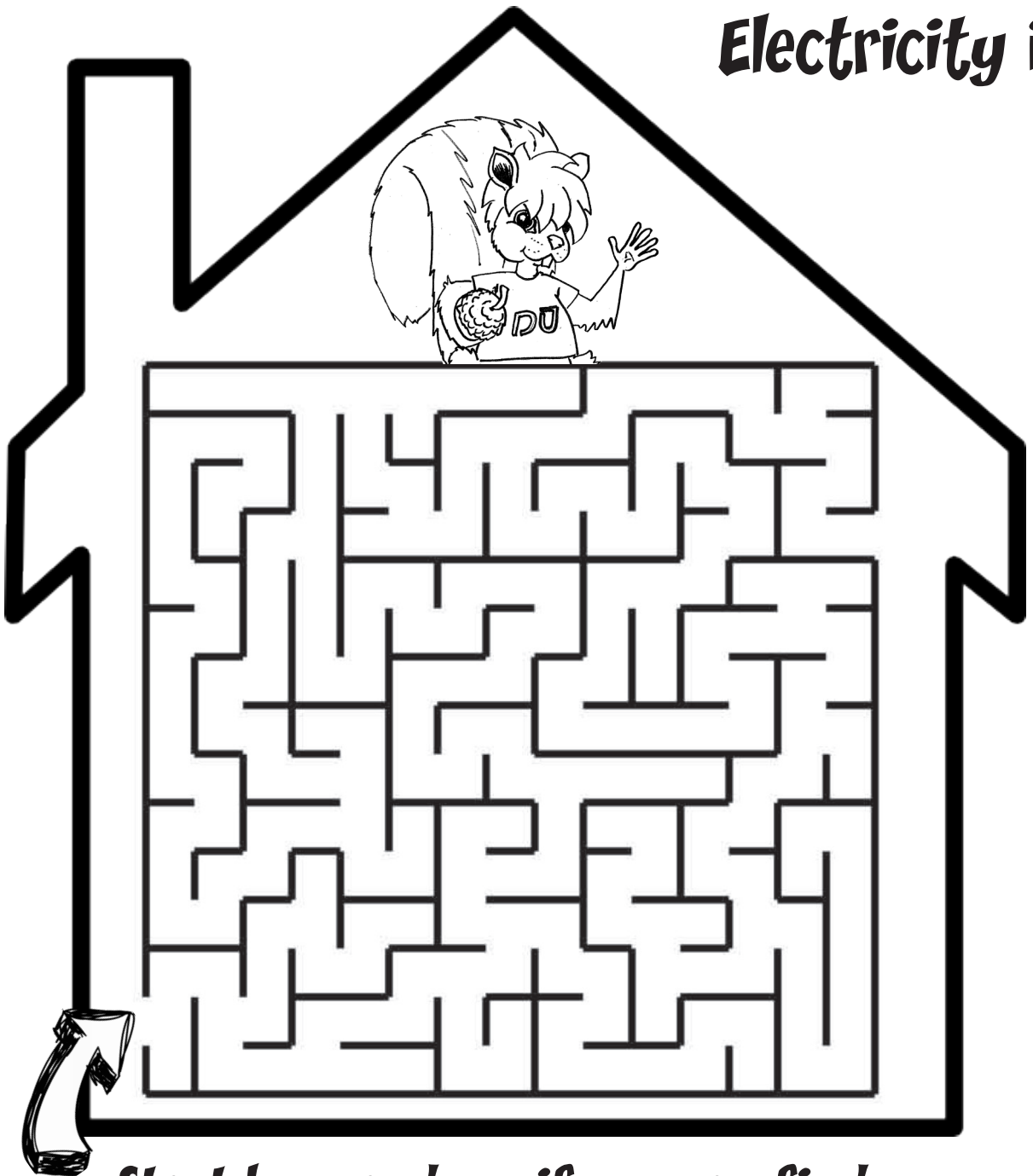


If your car or bus hits a power pole, stay inside!



Don't play on or around equipment that says "Danger" or "High Voltage"!

Electricity is



Start here and see if you can find your way to Flash's attic! He's waiting for you.

around us inside our homes too.

True or False? Circle your answer!

T OR F 1. Plug as many appliances as you want into ONE outlet.

T OR F 2. Never use a radio or hair dryer near water.

T OR F 3. Old power cords are okay - even if they have worn spots.

T OR F 4. Always yank the cord to unplug an appliance.

T OR F 5. Never stick your fingers or other objects into an outlet.

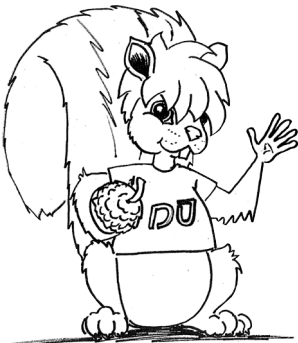
T OR F 6. It doesn't matter what wattage bulb I use in my lights.

T OR F 7. Cover outlets with plastic safety guards when not in use.

T OR F 8. It's okay to sit your drink on a TV or computer.

T OR F 9. Grown ups know everything about electricity.

T OR F 10. You should stay quiet - even when someone is in danger.



Did you beat Flash?

Turn the page and see!

Answers

T OR **F**

1. Never overload an outlet - even with plug strips!

T OR **F**

2. Correct! Water and electricity never mix!

T OR **F**

3. Nope. Exposed wires can give you quite a shock!

T OR **F**

4. Always grab the cord by the plug's base to remove it.

T OR **F**

5. Sticking objects into an outlet can shock you!

T OR **F**

6. Always use the wattage recommended on the light.

T OR **F**

7. Yep. This keeps little fingers from getting shocked.

T OR **F**

8. Gracious no! It could spill and short out the appliance.

T OR **F**

9. Not necessarily! You might be the "expert" in the room.

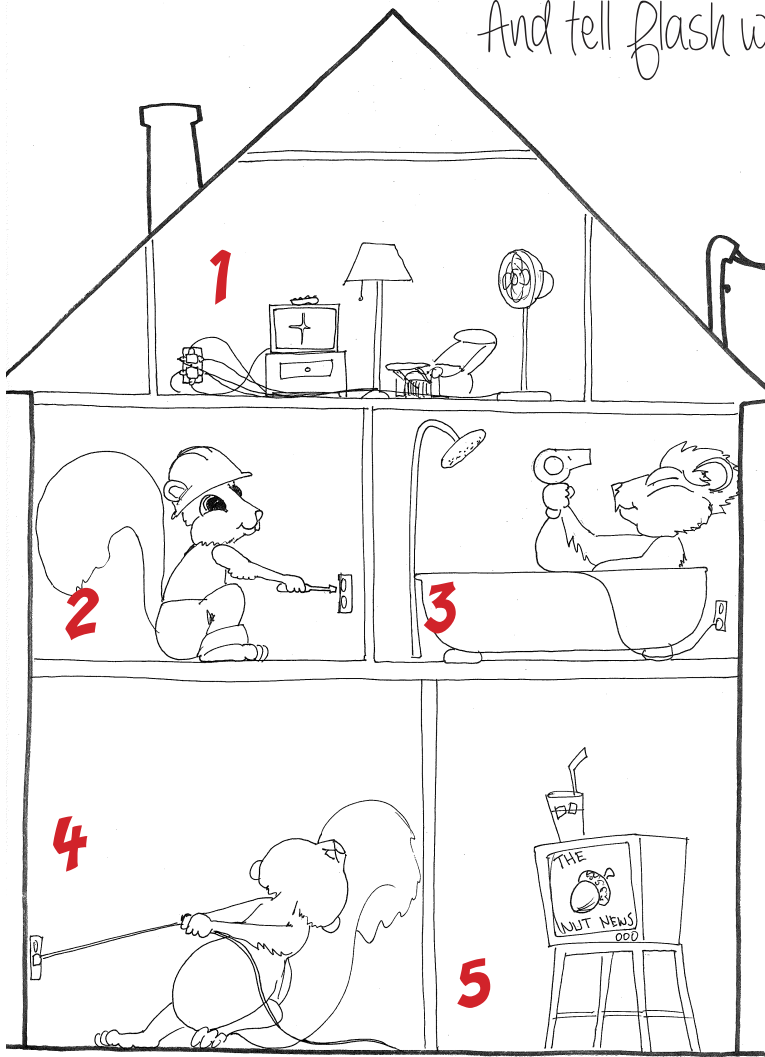
T OR **F**

10. Be respectful - but **SPEAK UP** if someone is in danger!

What was your score? ___ / 10 = ___ %

Now that you know the rules about indoor safety, find all the rulebreakers in this picture...

And tell Flash what they are doing wrong.



- 1 _____
- 2 _____
- 3 _____
- 4 _____
- 5 _____

**Flash got 7 out of 10 correct.
If you beat him, take a bow!**



At Decatur Utilities, the mission of our electric department is to provide you and your family with safe, reliable power that makes your life easier.

We want you to use electricity wisely and enjoy its benefits every day. But we also want you to be safe around it all the time!

Thanks for taking the time to meet Flash and learn about electrical safety.

Now that you know the rules for electrical safety, make sure to watch out for your family and friends.



PO Box 2232
Decatur, AL 35609

256-552-1400
www.decaturutilities.com

© 2014 All Rights Reserved.

SAFETY
in a ***FLASH***

Illustrations by Shawn Frey